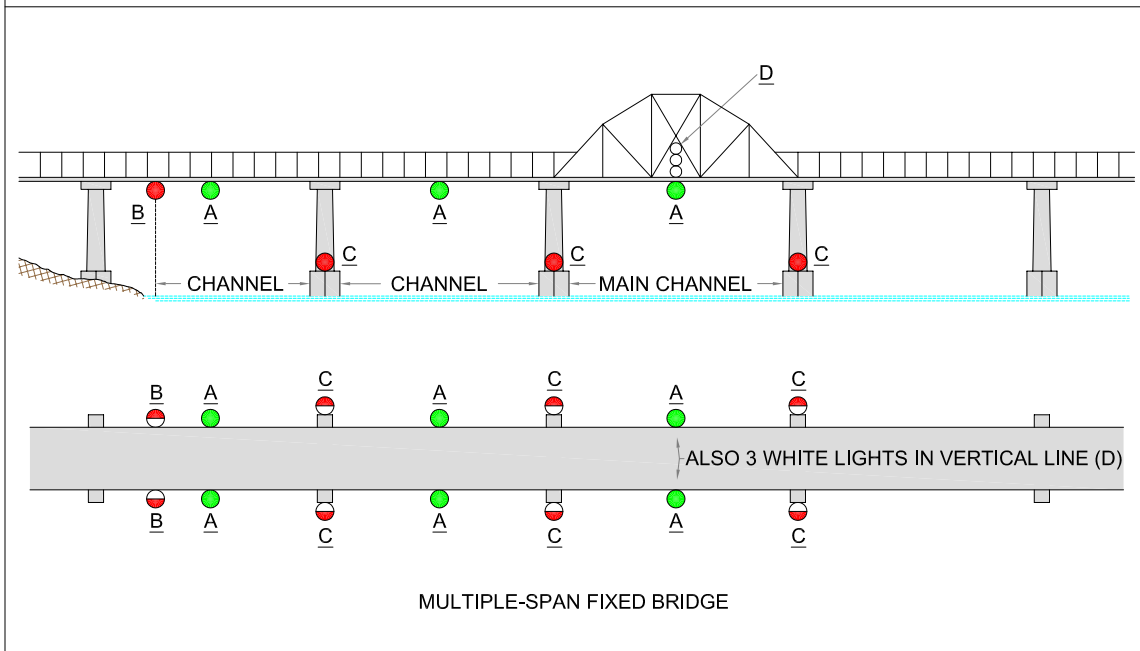
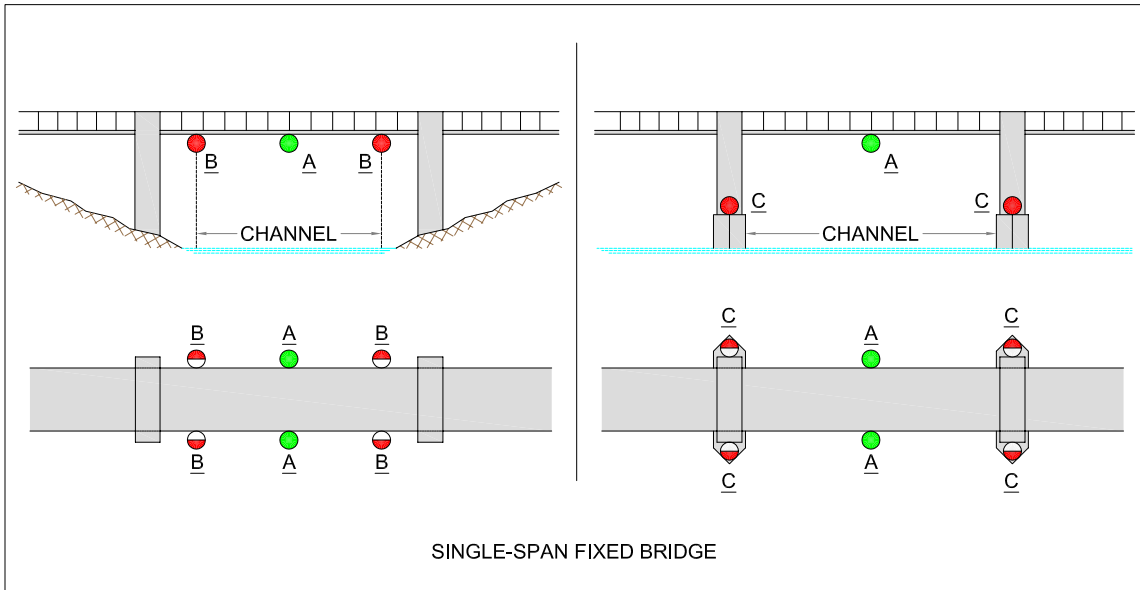


MINIMUM LIGHTING FOR FIXED BRIDGES

As recommended by the Department of Transportation, United States Coast Guard, Bridge Administration Division in their publication COMDTINST M16590.5A Encl. (6) 33 CFR 118.65.

Roadway Manufacturing does not assume responsibility for lighting guidelines shown or for errors in transcription.



LIGHT COLORS AND HORIZONTAL ARCS OF VISIBILITY

- | | |
|---|--|
| <p>A CHANNEL CENTER - 360° GREEN
(180° GREEN ON BRIDGES LIGHTED PRIOR TO JAN. 1, 1947, UNTIL LIGHTS ARE REPAIRED OR REPLACED)</p> | <p>C PIER - 180° RED</p> |
| <p>B CHANNEL MARGIN - 180° RED</p> | <p>D MAIN CHANNEL - 180° WHITE, 3 LIGHTS IN VERTICAL LINE
(60° - 180° ON BRIDGES LIGHTED PRIOR TO JAN. 1, 1953, UNTIL LIGHTS ARE REPAIRED OR REPLACED)</p> |